

ORDERING CODE

C3
S

PROJECT INFO

TYPE

DATE

QUANTITY

PERFORMANCE AT 4000K

	NOMINAL LUMEN OUTPUT	INPUT WATTS	EFFICACY
OUTPUT			
High	758 lm/ft	9.5 W/ft	80 lm/W
Standard	379 lm/ft	5 W/ft	80 lm/W

Custom tuned output available from 25% to 125% of high output. Please consult factory for custom lumen output and wattage.

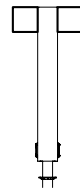
LIGHT LOSS FACTORS

	OUTPUT	LED CCT	CRI
BASELINE	LH	4000K	80+ CRI
	LS - 50%	3500K - 97%	90+ CRI - 80%
		3000K - 93%	

MOUNTING OPTIONS



(AS) | Single Cantilever



(AD) | Dual Cantilever

C3					S	
SERIES	LENGTH	OUTPUT	LED CCT	VOLTAGE	DIRECT OPTICS	MOUNTING
C3	_ Nominal Length* M_ Exact Length**	LS LED Standard Output LH LED High Output C_ LED Custom Output*	30 3000K 35 3500K 40 4000K	U Universal 120V - 277V 3 347V	S WISP™ Lens	AS_ Single Cantilever* AD_ Dual Cantilever*
	<small>*Specify in feet to the nearest foot (i.e. 12) **Specify in inches to then nearest 1/8 (i.e. M180.125)</small>	<small>*Available from 25% to 125% of LED High Output</small>				<small>*Specify length of cantilever in inches to the nearest 1/8"</small>

FINISH	DIMMING	OPTIONS
T a·lightanium™ W Satin White B Satin Black O_ Other*	D Standard 0-10 dimming* D1 Lutron Eco H series (LDE1) D3 Other Dimming**	M Multi-Circuit* N New York City Code _S (qty) Rocker Switches _R (qty) Receptacles _D (qty) Data Ports
<small>*Specify RAL#</small>	<small>*Dimming to 1% stated for standard 0-10v dimming **Specify model/series</small>	<small>*Submit multi-circuiting requirements</small>