

ORDERING CODE

APX3	B
-------------	----------

PROJECT INFO

DATE

TYPE

QUANTITY

PERFORMANCE AT 4000K

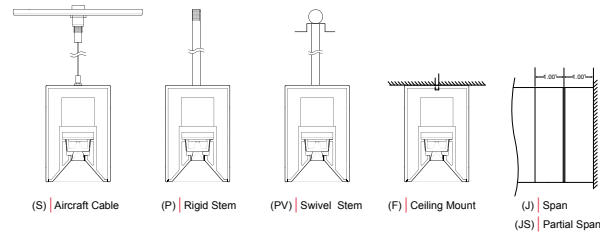
OUTPUT	OPTIC	NOMINAL LUMEN OUTPUT	INPUT WATTS	EFFICACY
High	55°	1,017 lm/ft	14 W/ft	72 lm/W
	22°	1,302 lm/ft	14 W/ft	92 lm/W
	HE	539 lm/ft	9.9 W/ft	54 lm/W
Standard	55°	508.5 lm/ft	7 W/ft	72 lm/W
	22°	651 lm/ft	7 W/ft	92 lm/W
	HE	269.5 lm/ft	5 W/ft	54 lm/W

Please consult factory for custom lumen output and wattage.

LIGHT LOSS FACTORS

BASELINE	OUTPUT	LED CCT	CRI
	LH	4000K	80+ CRI
		3500K - 97%	90+ CRI - 80%
		3000K - 93%	

MOUNTING OPTIONS



APX3	LENGTH OR PATTERN TYPE	OUTPUT	LED CCT	VOLTAGE	DIRECT OPTICS
APX3	_ Nominal Length* M_ Exact Length** PL_ "L" Shape*** PU_ "U" Shape*** PR_ Rectangle / Square***	LH LED High Output LS LED Standard Output C_ LED Custom Output*	30 3000K 35 3500K 40 4000K	U Universal 120V - 277V 3 347V	55 Lens Baffle 55 Degree* 22 Lens Baffle 22 Degree* HE HE Tech™
	<small>*Specify to nearest 1/16" lighted segment. **Specify in inches to the nearest 1/16" Minimum length nominal 12". ***Specify to nearest 6" lighted segment (See Pattern Guide for details)</small>	<small>*Custom tuned output available in the range of 25% to 100% of LH, contact Design Assist</small>			<small>*Fully illuminated corners not available with baffle optic. 1"x1" filler panel provided.</small>

B				
MOUNTING	FINISH	TRIM BAFFLE FINISH*	DIMMING	EMERGENCY
S Aircraft Cable* P Rigid Stem** PV Swivel Stem** F Ceiling / Surface Mount JS Partial Span J Full Span <small>*Standard 48" field adjustable cable, specify length to nearest inch if over 48". Black power cord provided for satin black and a-lightanium finish and white power cord provided for all other fixture finishes, unless otherwise specified. **Indicate stem length to nearest inch. 1.00" minimum.</small>	T a-lightanium™ W Satin White B Satin Black O_ Other* <small>*Specify RAL#</small>	B Satin Black <small>*Blank panels to match finish</small>	D Standard 0-10 dimming* D1 Lutron Eco H series (LDE1) D3 Other Dimming** <small>*Dimming to 1% stated for standard 0-10v dimming **Specify model/series</small>	EC Emergency - circuited E_ Emergency - battery* <small>*Factory-installed emergency battery pack: ILB-SL-CP12 (1200lm for 90min). Specify desired quantity of batteries. Not available on fixtures < 4' length. Not available for 347V. See technical data for more information.</small>

SENSORS	OPTIONS
O Occupancy Sensor* P Photocell / Daylight Sensor** OP Occupancy & Daylight Sensor <small>Filler panel required that will affect fixtures nominal length *Wallstopper FS-205 (Ø17) **Wallstopper FD-301 wired for daylight harvesting. Requires 0-10v dimming.</small>	M Multi-Circuit* R Right Endcap Feed L Left Endcap Feed N New York City Code CRI 90+ CRI <small>*Submit multi-circuiting requirements</small>