

ORDERING CODE

**D8**  
**H**

PROJECT INFO

TYPE

DATE

QUANTITY

PERFORMANCE AT 4000K

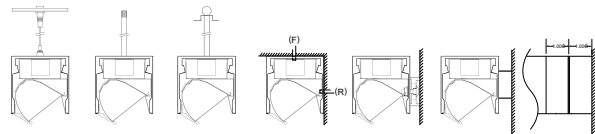
|                 | NOMINAL LUMEN OUTPUT | INPUT WATTS     | EFFICACY       |
|-----------------|----------------------|-----------------|----------------|
| OUTPUT          |                      |                 |                |
| <b>High</b>     | <b>587 lm/ft</b>     | <b>9.5 W/ft</b> | <b>62 lm/W</b> |
| <b>Standard</b> | <b>294.5 lm/ft</b>   | <b>5 W/ft</b>   | <b>62 lm/W</b> |

Custom tuned output available from 25% to 125% of high output. Please consult factory for custom lumen output and wattage.

LIGHT LOSS FACTORS

|          | OUTPUT          | LED CCT            | CRI                  |
|----------|-----------------|--------------------|----------------------|
| BASELINE | <b>LH</b>       | <b>4000K</b>       | <b>80+ CRI</b>       |
|          | <b>LS - 50%</b> | <b>3500K - 97%</b> | <b>90+ CRI - 80%</b> |
|          |                 | <b>3000K - 93%</b> |                      |

MOUNTING OPTIONS



(S) Aircraft Cable (P) Rigid Stem (PV) Swivel Stem (F) Ceiling Mount (M) Mullion Blocks (H) Horizontal Setoff Bracket (J) Span (R) Direct Wall Mount

| D8  |  |  |   |   | H                        |
|---|--|--|---|---|--------------------------|
| SERIES  | LENGTH   | OUTPUT   | LED CCT   | VOLTAGE   | DIRECT ASYMMETRIC OPTICS |
| D8  | <b>_</b> Nominal Length*<br><b>M_</b> Exact Length** | <b>LS</b> LED Standard Output<br><b>LH</b> LED High Output<br><b>C_</b> LED Custom Output* | <b>30</b> 3000K<br><b>35</b> 3500K<br><b>40</b> 4000K | <b>U</b> Universal 120V - 277V<br><b>3</b> 347V | <b>H</b> HTD Lens™       |
| *Specify in feet to the nearest foot (i.e. 12)<br>**Specify in inches to then nearest 1/8 (i.e. M180.125) |  | *Available from 25% to 125% of LED High Output   |   |   |                          |

| MOUNTING   | FINISH   | DIMMING  | EMERGENCY  | OPTIONS   |
|--|--|--|--|---|
| <b>S</b> Aircraft Cable*<br><b>P_</b> Rigid Stem**<br><b>PV_</b> Swivel Stem**<br><b>R</b> Direct Wall Mount<br><b>M_</b> Mullion Blocks***<br><b>H_</b> Horizontal Setoff Bracket****<br><b>JS</b> Partial Span<br><b>J</b> Full Span<br><b>F</b> Ceiling Mount<br><br><small>*Standard 48" field adjustable cable, specify length to nearest inch if over 48". Black power cord provided for satin black and a-lighitanium finish and white power cord provided for all other fixture finishes, unless otherwise specified.<br/>                     **Indicate stem length to nearest inch, 1.00" minimum.<br/>                     ***Enter "1" for 1" depth. Enter "5" for 1/2" depth</small> | <b>T</b> a-lighitanium™<br><b>W</b> Satin White<br><b>B</b> Satin Black<br><b>O_</b> Other*<br><br><small>**Specify RAL#</small> | <b>D</b> Standard 0-10 dimming*<br><b>D1</b> HiLume Ecosystems 1% (LDE1)<br><b>D3</b> Other Dimming**<br><br><small>*Dimming to 1% stated for standard 0-10v dimming<br/>                     **Specify model/series</small> | <b>EC</b> Emergency - circuited<br><b>E_</b> Emergency - battery*<br><br><small>*Factory-installed emergency battery pack: ILB-SL-CP12 (1200lm for 90min). Specify desired quantity of batteries. Not available on fixtures &lt; 4' length. Not available for 347V. See technical data for more information.</small> | <b>M</b> Multi-Circuit*<br><b>R</b> Right Endcap Feed<br><b>L</b> Left Endcap Feed<br><b>N</b> New York City Code<br><b>CRI</b> 90+ CRI<br><br><small>*Submit multi-circuiting requirements</small> |