

ORDERING CODE

<p>D8</p> <p>H</p>

PROJECT INFO

TYPE

DATE

QUANTITY

PERFORMANCE AT 4000K

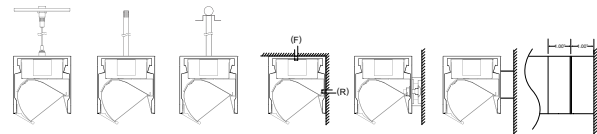
	NOMINAL LUMEN OUTPUT	INPUT WATTS	EFFICACY
OUTPUT			
High	587 lm/ft	9.5 W/ft	62 lm/W
Standard	294.5 lm/ft	5 W/ft	62 lm/W

Custom tuned output available from 25% to 125% of high output. Please consult factory for custom lumen output and wattage.

LIGHT LOSS FACTORS

	OUTPUT	LED CCT	CRI
BASELINE	LH	4000K	80+ CRI
	LS - 50%	3500K - 97%	90+ CRI - 80%
		3000K - 93%	

MOUNTING OPTIONS



(S) Aircraft Cable (P) Rigid Stem (PV) Swivel Stem (F) Ceiling Mount (M) Mullion Blocks (H) Horizontal Setoff Bracket (J) Span (JS) Partial Span (R) Direct Wall Mount

D8					H
SERIES	LENGTH	OUTPUT	LED CCT	VOLTAGE	DIRECT ASYMMETRIC OPTICS
D8	_ Nominal Length* M_ Exact Length**	LS LED Standard Output LH LED High Output C_ LED Custom Output*	30 3000K 35 3500K 40 4000K	U Universal 120V - 277V 3 347V	H HTD Lens™
<small>*Specify in feet to the nearest foot (i.e. 12) **Specify in inches to then nearest 1/8 (i.e. M180.125)</small>		<small>*Available from 25% to 125% of LED High Output</small>			

MOUNTING	FINISH	DIMMING	EMERGENCY	OPTIONS
S Aircraft Cable* P_ Rigid Stem** PV_ Swivel Stem** R Direct Wall Mount M_ Mullion Blocks*** H_ Horizontal Setoff Bracket*** JS Partial Span J Full Span F Ceiling Mount <small>*Standard 48" field adjustable cable, specify length to nearest inch if over 48". Black power cord provided for satin black and a-lighitanium finish and white power cord provided for all other fixture finishes, unless otherwise specified. **Indicate stem length to nearest inch, 1.00" minimum. ***Enter "1" for 1" depth. Enter "5" for 1/2" depth</small>	T a-lighitanium™ W Satin White B Satin Black O_ Other* <small>**Specify RAL#</small>	D Standard 0-10 dimming* D1 Lutron Eco H series (LDE1) D3 Other Dimming** <small>*Dimming to 1% stated for standard 0-10v dimming **Specify model/series</small>	EC Emergency - circuited E_ Emergency - battery* <small>*Factory-installed emergency battery pack: ILB-SL-CP12 (1200lm for 90min). Specify desired quantity of batteries. Not available on fixtures < 4' length. Not available for 347V. See technical data for more information.</small>	M Multi-Circuit* R Right Endcap Feed L Left Endcap Feed N New York City Code CRI 90+ CRI <small>*Submit multi-circuiting requirements</small>