

ORDERING CODE

ACL1

D

PROJECT INFO

TYPE

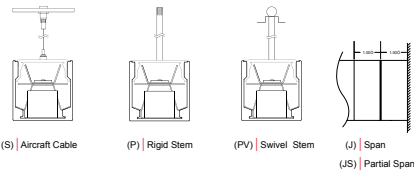
DATE

QUANTITY

LIGHT LOSS FACTORS

	OUTPUT	LED CCT	CRI
BASILINE	LH	4000K	80+ CRI
	LS - 50%	3500K - 97%	90+ CRI - 80%
		3000K - 93%	

MOUNTING OPTIONS



PERFORMANCE AT 4000K

OUTPUT	DISTRIBUTION	NOMINAL LUMEN OUTPUT	INPUT WATTS	EFFICACY
High	Symmetric Wide	673 lm/ft	9 W/ft	75 lm/W
	Symmetric Narrow	912 lm/ft	9.6 W/ft	95 lm/W
	Asymmetric	670 lm/ft	9.6 W/ft	70 lm/W
Standard	Symmetric Wide	352.5 lm/ft	5 W/ft	74 lm/W
	Symmetric Narrow	456 lm/ft	5 W/ft	95 lm/W
	Asymmetric	335 lm/ft	5 W/ft	70 lm/W

Custom tuned output available from 25% to 125% of high output. Please consult factory for custom lumen output and wattage.

IF ALL PRODUCT NOMENCLATURE IS LISTED WITH A QS, THIS PRODUCT IS AVAILABLE IN OUR QUICK-SHIP PROGRAM

ACL1					
SERIES	LENGTH OR PATTERN TYPE	OUTPUT	LED CCT	VOLTAGE	INDIRECT DISTRIBUTION
ACL1	_ Nominal Length* QS M_ Exact Length** PL_ "L" Shape*** QS PU_ "U" Shape*** PR_ Rectangle / Square*** CP Custom Pattern****	LS Indirect LED Standard Output QS LH Indirect LED High Output QS C_ Indirect LED Custom Output*	30 3000K QS 35 3500K QS 40 4000K QS	U Universal 120V - 277V QS 3 347V QS	M Symmetric Wide* QS G Symmetric Narrow QS N Asymmetric
<small>*Specify in feet to the nearest foot (i.e. 12) **Specify in inches to then nearest 1/8 (i.e. M180.125) ***Specify in inches to the nearest 1/8 (See Pattern Guide) ****Contact Design Assist</small>		<small>*Available from 25% to 125% of LED High Output</small>		<small>*Not recommended for wall mount</small>	

D				
INDIRECT OPTICS	MOUNTING	FINISH	DIMMING	EMERGENCY
D Rigid Diffuse Dust Cover QS	S Aircraft Cable* QS P_ Rigid Stem** PV_ Swivel Stem** JS Partial Span J Full Span <small>*Standard 48" field adjustable cable, specify length to nearest inch if over 48". Black power cord provided for satin black and a-lightnium finish and white power cord provided for all other fixture finishes, unless otherwise specified. **Indicate stem length to nearest inch. 1.00" minimum.</small>	T a-lightnium™ QS W Satin White QS B Satin Black O_ Other* <small>*Specify RAL#</small>	D Standard 0-10 dimming* QS D1 HiLume Ecosystems 1% (LDE1) D3 Other Dimming**	EC Emergency - circuited E_ Emergency - battery* QS <small>*Factory-installed emergency battery pack: ILB-SL-CP12 (1200lm for 90min). Specify desired quantity of batteries. Not available on fixtures < 4' length. Not available for 347V. See technical data for more information.</small>

SENSORS	OPTIONS
O Occupancy Sensor* P Photocell / Daylight Sensor** OP Occupancy & Daylight Sensor	M Multi-Circuit* R Right Endcap Feed L Left Endcap Feed N New York City Code K Natatorium Application Q Wet Location** CRI 90+ CRI <small>*Submit multi-circuiting requirements **Not available with aircraft cable. Wet location suitable in full coverage and/or mullion mounted applications (direct to sky not recommended); not suitable for extreme weather applications. Refer to Wet Location brochure and contact Design Assist for more information.</small>
<small>**Wattstopper FS-205 (Ø1") ***Wattstopper FD-301 wired for daylight harvesting. Requires 0-10v dimming.</small>	