

ORDERING CODE

ACL2 +  
D HE

PROJECT INFO

TYPE

DATE

QUANTITY

PERFORMANCE AT 4000K

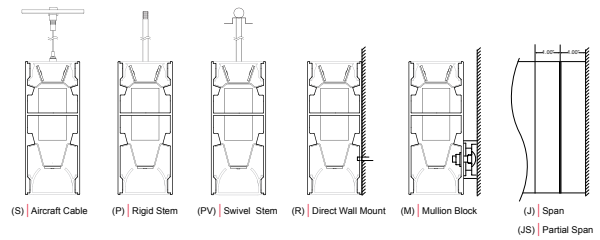
OUTPUT	DISTRIBUTION	NOMINAL LUMEN OUTPUT		INPUT WATTS	EFFICACY
		INDIRECT	DIRECT		
High	Symmetric	N/A	921 lm/ft	9.7 W/ft	95 lm/W
	Symmetric Wide	673 lm/ft	N/A	9 W/ft	75 lm/W
	Symmetric Narrow	912 lm/ft	N/A	9.6 W/ft	95 lm/W
	Asymmetric	670 lm/ft	N/A	9.6 W/ft	70 lm/W
Standard	Symmetric	N/A	460.5 lm/ft	5 W/ft	95 lm/W
	Symmetric Wide	352.5 lm/ft	N/A	5 W/ft	74 lm/W
	Symmetric Narrow	456 lm/ft	N/A	5 W/ft	95 lm/W
	Asymmetric	335 lm/ft	N/A	5 W/ft	70 lm/W

Custom tuned output available from 25% to 125% of high output. Please consult factory for custom lumen output and wattage.

LIGHT LOSS FACTORS

	OUTPUT	LED CCT	CRI
BASELINE	LH	4000K	80+ CRI
	LS - 50%	3500K - 97%	90+ CRI - 80%
		3000K - 93%	

MOUNTING OPTIONS



ACL2			+			
SERIES	LENGTH OR PATTERN TYPE		OUTPUT	LED CCT	VOLTAGE	INDIRECT DISTRIBUTION
ACL2	_ Nominal Length* M_ Exact Length**  PL_ "L" Shape*** PU_ "U" Shape*** PR_ Rectangle / Square*** CP_ Custom Pattern****		ILS Indirect LED Standard Output ILH Indirect LED High Output IC_ Indirect LED Custom Output* + DLS Direct LED Standard Output DLH Direct LED High Output DC_ Direct LED Custom Output*	30 3000K 35 3500K 40 4000K	U Universal 120V - 277V 3 347V	M Symmetric Wide* G Symmetric Narrow N Asymmetric
<small>*Specify in feet to the nearest foot (i.e. 12)                      **Specify in inches to then nearest 1/8 (i.e. M180.125)                      ***Specify in inches to the nearest 1/8 (See Pattern Guide for details)                      ****Contact Design Assist</small>			<small>*Available from 25% to 125% of LED High Output</small>			<small>*Not recommended for wall mount</small>

D	HE			
INDIRECT OPTICS	DIRECT OPTICS	MOUNTING	FINISH	CIRCUITING
D Rigid Diffuse Dust Cover	HE HE Tech™	S Aircraft Cable* P_ Rigid Stem** PV_ Swivel Stem** R Direct Wall Mount M_ Mullion Blocks*** JS Partial Span J Full Span  <small>*Standard 48" field adjustable cable, specify length to nearest inch if over 48".                      Black power cord provided for satin black and a-lightanium finish and white power cord provided for all other fixture finishes, unless otherwise specified.                      **Indicate stem length to nearest inch. 1.00" minimum.                      ***Enter "1" for 1" depth. Enter "5" for 1/2" depth</small>	T a-lightanium™ W Satin White B Satin Black O_ Other*  <small>*Specify RAL#</small>	1 Single Circuit 2 Multi-Circuit* M Other Multi-Circuit**  <small>*Separate uplight and downlight circuits                      **Submit multi-circuiting requirements</small>

DIMMING	EMERGENCY	SENSORS	OPTIONS
D Standard 0-10 dimming* D1 Lutron Eco H series (LDE1) D3 Other Dimming**	EC Emergency - circuited E_ Emergency - battery*  <small>*Factory-installed emergency battery pack: ILB-SL-CP12 (1200lm for 90min). Specify desired quantity of batteries. Not available on fixtures &lt; 4' length. Not available for 347V. See technical data for more information.</small>	O Occupancy Sensor* P Photocell / Daylight Sensor** OP Occupancy & Daylight Sensor  <small>*Wattstopper FS-205 (Ø1")                      **Wattstopper FD-301 wired for daylight harvesting. Requires 0-10v dimming.</small>	R Right Endcap Feed L Left Endcap Feed N New York City Code K Natatorium Application* Q Wet Location** CRI 90+ CRI  <small>*Not available with aircraft cable. See guide and contact Design Assist                      **Not available with aircraft cable. Wet location suitable in full coverage and/or mullion mounted applications (direct to sky not recommended); not suitable for extreme weather applications. Refer to Wet Location brochure and contact Design Assist for more information.</small>