

ORDERING CODE

D2 + **D**

PROJECT INFO

DATE

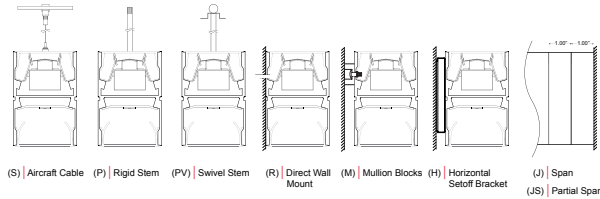
TYPE

QUANTITY

LIGHT LOSS FACTORS

	OUTPUT	LED CCT	CRI
BASELINE	LH	4000K	80+ CRI
	LS - 50%	3500K - 97%	90+ CRI - 80%
		3000K - 93%	

MOUNTING OPTIONS



PERFORMANCE AT 4000K

OUTPUT	DISTRIBUTION	NOMINAL LUMEN OUTPUT		INPUT WATTS	EFFICACY
		INDIRECT	DIRECT		
High	Symmetric	N/A	829 lm/ft	9.7 W/ft	85 lm/W
	Symmetric Wide	824 lm/ft	N/A	9.2 W/ft	90 lm/W
	Symmetric Narrow	1061 lm/ft	N/A	9.7 W/ft	109 lm/W
	Asymmetric	768 lm/ft	665 lm/ft	9.7 W/ft	79 70 lm/W
Standard	Symmetric	N/A	414.5 lm/ft	5 W/ft	85 lm/W
	Symmetric Wide	412 lm/ft	N/A	5 W/ft	90 lm/W
	Symmetric Narrow	530.5 lm/ft	N/A	5 W/ft	109 lm/W
	Asymmetric	384 lm/ft	332.5 lm/ft	5 W/ft	79 70 lm/W

Custom tuned output available from 25% to 125% of high output. Please consult factory for custom lumen output and wattage.

D2			+			
SERIES	LENGTH OR PATTERN TYPE	OUTPUT	LED CCT	VOLTAGE	INDIRECT DISTRIBUTION	
D2	_ Nominal Length* M_ Exact Length** PL_ "L" Shape*** PU_ "U" Shape*** PR_ Rectangle / Square*** CP Custom Pattern****	ILS Indirect LED Standard Output ILH Indirect LED High Output IC_ Indirect LED Custom Output* + DLS Direct LED Standard Output DLH Direct LED High Output DC_ Direct LED Custom Output*	30 3000K 35 3500K 40 4000K	U Universal 120V - 277V 3 347V	M Symmetric Wide* G Symmetric Narrow N Asymmetric	
<small>*Specify in feet to the nearest foot (i.e. 12) **Specify in inches to the nearest 1/8 (i.e. M180.125) ***Specify in inches to the nearest 1/8 (See Pattern Guide for details) ****Contact Design Assist</small>		<small>*Available from 25% to 125% of LED High Output</small>		<small>*Not recommended for wall mount</small>		

D					
INDIRECT OPTICS	DIRECT OPTICS	MOUNTING	FINISH	CIRCUITING	
D Rigid Diffuse Dust Cover	HE HE Tech™ KS Awash Kicker + WISP	S Aircraft Cable* P_ Rigid Stem** PV_ Swivel Stem** R Direct Wall Mount M_ Mullion Blocks*** H_ Horizontal Setoff Bracket*** JS Partial Span J Full Span <small>*Standard 48" field adjustable cable, specify length to nearest inch if over 48". Black power cord provided for satin black and a-lightium finish and white power cord provided for all other fixture finishes, unless otherwise specified. **Indicate stem length to nearest inch, 1.00" minimum. ***Enter "1" for 1" depth. Enter "5" for 1/2" depth</small>	T a-lightium™ W Satin White B Satin Black O_ Other*	1 Single Circuit 2 Multi-Circuit* M Other Multi-Circuit**	
		<small>*Specify RAL#</small>		<small>*Separate uplight and downlight circuits **Submit multi-circuiting requirements</small>	

DIMMING	EMERGENCY	SENSORS	OPTIONS
D Standard 0-10 dimming* D1 Lutron Eco H series (LDE1) D3 Other Dimming**	EC Emergency - circuited E_ Emergency - battery*	O Occupancy Sensor* P Photocell / Daylight Sensor** OP Occupancy & Daylight Sensor	MRL_ 2" LED Downlight Module* R Right Endcap Feed L Left Endcap Feed N New York City Code K Natatorium Application** Q Wet Location*** CRI 90+
<small>*Factory-installed emergency battery pack: ILB-SL-CP12 (1200lm for 90min). Specify desired quantity of batteries. Not available on fixtures < 4' length. Not available for 347V. See technical data for more information.</small>		<small>*Wattstopper FS-205 (Ø1") **Wattstopper FD-301 wired for daylight harvesting. Requires 0-10v dimming.</small>	<small>*Specify required quantity, see LED Module Addendum for additional ordering details. **Not available with aircraft cable. See guide and contact Design Assist. ***Not available with aircraft cable. Wet location suitable in full coverage and/or mullion mounted applications (direct to sky not recommended); not suitable for extreme weather applications. Refer to Wet Location brochure and contact Design Assist for more information.</small>