

ORDERING CODE

D1

D

PROJECT INFO

TYPE

DATE

QUANTITY

PERFORMANCE AT 4000K

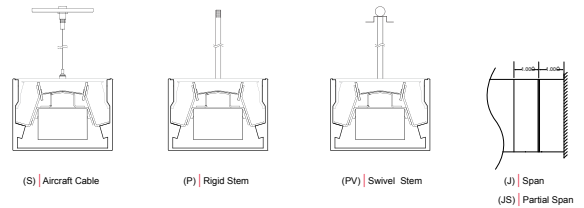
		NOMINAL LUMEN OUTPUT	INPUT WATTS	EFFICACY	
OUTPUT	DISTRIBUTION				
V. High	Symmetric Wide	1,648 lm/ft	20 W/ft	90 lm/W	
	High	Symmetric Wide	824 lm/ft	9.2 W/ft	90 lm/W
		Symmetric Narrow	1060 lm/ft	9.7 W/ft	109 lm/W
Standard	Asymmetric	768 lm/ft	9.7 W/ft	79 lm/W	
	Standard	Symmetric Wide	412 lm/ft	5 W/ft	90 lm/W
		Symmetric Narrow	530 lm/ft	5 W/ft	109 lm/W
	Asymmetric	384 lm/ft	5 W/ft	79 lm/W	

Custom tuning of 25% of LH to 100% of LVH for symmetric wide. Custom tuning of 25% to 125% of LH for symmetric narrow and asymmetric. Please consult factory for custom lumen output and wattage.

LIGHT LOSS FACTORS

	OUTPUT	LED CCT	CRI
BASILINE	LH	4000K	80+ CRI
	LS - 50%	3500K - 97%	90+ CRI - 80%
		3000K - 93%	

MOUNTING OPTIONS



IF ALL PRODUCT NOMENCLATURE IS LISTED WITH A QS, THIS PRODUCT IS AVAILABLE IN OUR QUICK-SHIP PROGRAM

D1					
SERIES	LENGTH OR PATTERN TYPE	OUTPUT	LED CCT	VOLTAGE	INDIRECT DISTRIBUTION
D1	Nominal Length* QS Exact Length** PL_ "L" Shape*** QS PU_ "U" Shape*** PR_ Rectangle / Square*** CP Custom Pattern****	LS LED Standard Output QS LH LED High Output QS LVH LED Very High Output* C_ LED Custom Output**	30 3000K QS 35 3500K QS 40 4000K QS	U Universal 120V - 277V QS 3 347V	M Symmetric Wide QS G Symmetric Narrow QS N Asymmetric
<small>*Specify in feet to the nearest foot (i.e. 12) **Specify in inches to then nearest 1/8 (i.e. M180.125) ***Specify in inches to the nearest 1/8 (See Pattern Guide) ****Contact Design Assist</small>		<small>*Available on "M" symmetric wide distribution only **Contact Design Assist for available custom tuned output range</small>			

D				
INDIRECT OPTICS	MOUNTING	FINISH	DIMMING	EMERGENCY
D Rigid Diffuse Dust Cover QS	S Aircraft Cable* QS P_ Rigid Stem** PV_ Swivel Stem** JS Partial Span J Full Span <small>*Standard 48" field adjustable cable, specify length to nearest inch if over 48". Black power cord provided for satin black and a-lightanium finish and white power cord provided for all other fixture finishes, unless otherwise specified. **Indicate stem length to nearest inch. 1.00" minimum.</small>	T a-lightanium™ QS W Satin White QS B Satin Black O_ Other* <small>*Specify RAL#</small>	D Standard 0-10 dimming* QS D1 HiLume Ecosystems 1% (LDE1) D3 Other Dimming**	EC Emergency - circuited E_ Emergency - battery* QS <small>*Factory-installed emergency battery pack: ILB-SL-CP12 (1200lm for 90min). Specify desired quantity of batteries. Not available on fixtures < 4" length. Not available for 347V. See technical data for more information.</small>
		<small>*Dimming to 1% stated for standard 0-10v dimming **Specify model/series</small>		

SENSORS	OPTIONS
O Occupancy Sensor* P Photocell / Daylight Sensor** OP Occupancy & Daylight Sensor	M Multi-Circuit* R Right Endcap Feed L Left Endcap Feed N New York City Code K Natatorium Application Q Wet Location** CRI 90+ <small>*Submit multi-circuiting requirements **Not available with aircraft cable. Wet location suitable in full coverage and/or mullion mounted applications (direct to sky not recommended); not suitable for extreme weather applications. Refer to Wet Location brochure and contact Design Assist for more information.</small>
<small>*Wattstopper FS-205 (Ø1") **Wattstopper FD-301 wired for daylight harvesting. Requires 0-10v dimming.</small>	