

ORDERING CODE

<b>G1</b>	<b>D</b>
-----------	----------

PROJECT INFO

TYPE

DATE

QUANTITY

PERFORMANCE AT 4000K

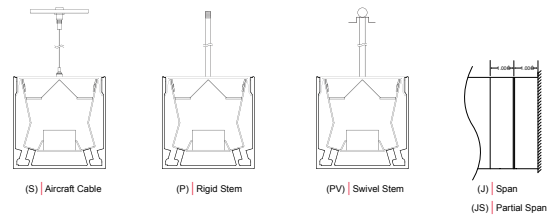
OUTPUT	DISTRIBUTION	NOMINAL LUMEN OUTPUT	INPUT WATTS	EFFICACY
V. High	Symmetric Wide	1,832 lm/ft	20 W/ft	96 lm/W
High	Symmetric Wide	916 lm/ft	9.5 W/ft	96 lm/W
	Asymmetric	882 lm/ft	9.5 W/ft	93 lm/W
Standard	Symmetric Wide	461.5 lm/ft	4.75 W/ft	97 lm/W
	Asymmetric	441 lm/ft	5 W/ft	93 lm/W

Custom tuning available between LS and LVH for symmetric wide. Custom tuning of 25% to 125% of LH for asymmetric. Please consult factory for custom lumen output and wattage.

LIGHT LOSS FACTORS

	OUTPUT	LED CCT	CRI
BASELINE	LH	4000K	80+ CRI
	LS - 50%	3500K - 97%	90+ CRI - 80%
		3000K - 93%	

MOUNTING OPTIONS



SERIES	LENGTH OR PATTERN TYPE	OUTPUT	LED CCT	VOLTAGE	INDIRECT DISTRIBUTION
G1	<p>Nominal Length*</p> <p>Exact Length**</p> <p>PL_ "L" Shape***</p> <p>PU_ "U" Shape***</p> <p>PR_ Rectangle / Square***</p> <p>CP Custom Pattern****</p>	<p>LS LED Standard Output</p> <p>LH LED High Output</p> <p>LVH LED Very High Output*</p> <p>C_ LED Custom Output**</p>	<p>30 3000K</p> <p>35 3500K</p> <p>40 4000K</p>	<p>U Universal 120V - 277V</p> <p>3 347V</p>	<p>M Symmetric Wide</p> <p>N Asymmetric</p>

\*Specify in feet to the nearest foot (i.e. 12)  
\*\*Specify in inches to the nearest 1/8 (i.e. M180.125)  
\*\*\*Specify in inches to the nearest 1/8 (See Pattern Guide for details)  
\*\*\*\*Contact Design Assist

\*Available on "M" symmetric wide distribution only  
\*\*Contact Design Assist for available custom tuned output range

D	INDIRECT OPTICS	MOUNTING	FINISH	DIMMING	EMERGENCY
D	Rigid Diffuse Dust Cover	<p>S Aircraft Cable*</p> <p>P_ Rigid Stem**</p> <p>PV_ Swivel Stem**</p> <p>JS Partial Span</p> <p>J Full Span</p> <p><small>*Standard 48" field adjustable cable, specify length to nearest inch if over 48". Black power cord provided for satin black and a-lightanium finish and white power cord provided for all other fixture finishes, unless otherwise specified. **Indicate stem length to nearest inch. 1.00" minimum.</small></p>	<p>T a-lightanium™</p> <p>W Satin White</p> <p>B Satin Black</p> <p>O_ Other*</p> <p><small>*Specify RAL#</small></p>	<p>D Standard 0-10 dimming*</p> <p>D1 HiLume Ecosystems 1% (LDE1)</p> <p>D3 Other Dimming**</p> <p><small>*Dimming to 1% stated for standard 0-10v dimming **Specify model/series</small></p>	<p>EC Emergency - circuited</p> <p>E_ Emergency - battery*</p> <p><small>*Factory-installed emergency battery pack: ILB-SL-CP12 (1200lm for 90min). Specify desired quantity of batteries. Not available on fixtures &lt; 4' length. Not available for 347V. See technical data for more information.</small></p>

SENSORS	OPTIONS
<p>O Occupancy Sensor*</p> <p>P Photocell / Daylight Sensor**</p> <p>OP Occupancy &amp; Daylight Sensor</p>	<p>M Multi-Circuit*</p> <p>N New York City Code</p> <p>K Natatorium Application</p> <p>Q Wet Location**</p> <p>CRI 90+</p> <p><small>*Submit multi-circuiting requirements **Not available with aircraft cable. Wet location suitable in full coverage and/or mullion mounted applications (direct to sky not recommended); not suitable for extreme weather applications. Refer to Wet Location brochure and contact Design Assist for more information.</small></p>

\*Wattstopper FS-205 (Ø1")  
\*\*Wattstopper FD-301 wired for daylight harvesting. Requires 0-10v dimming.